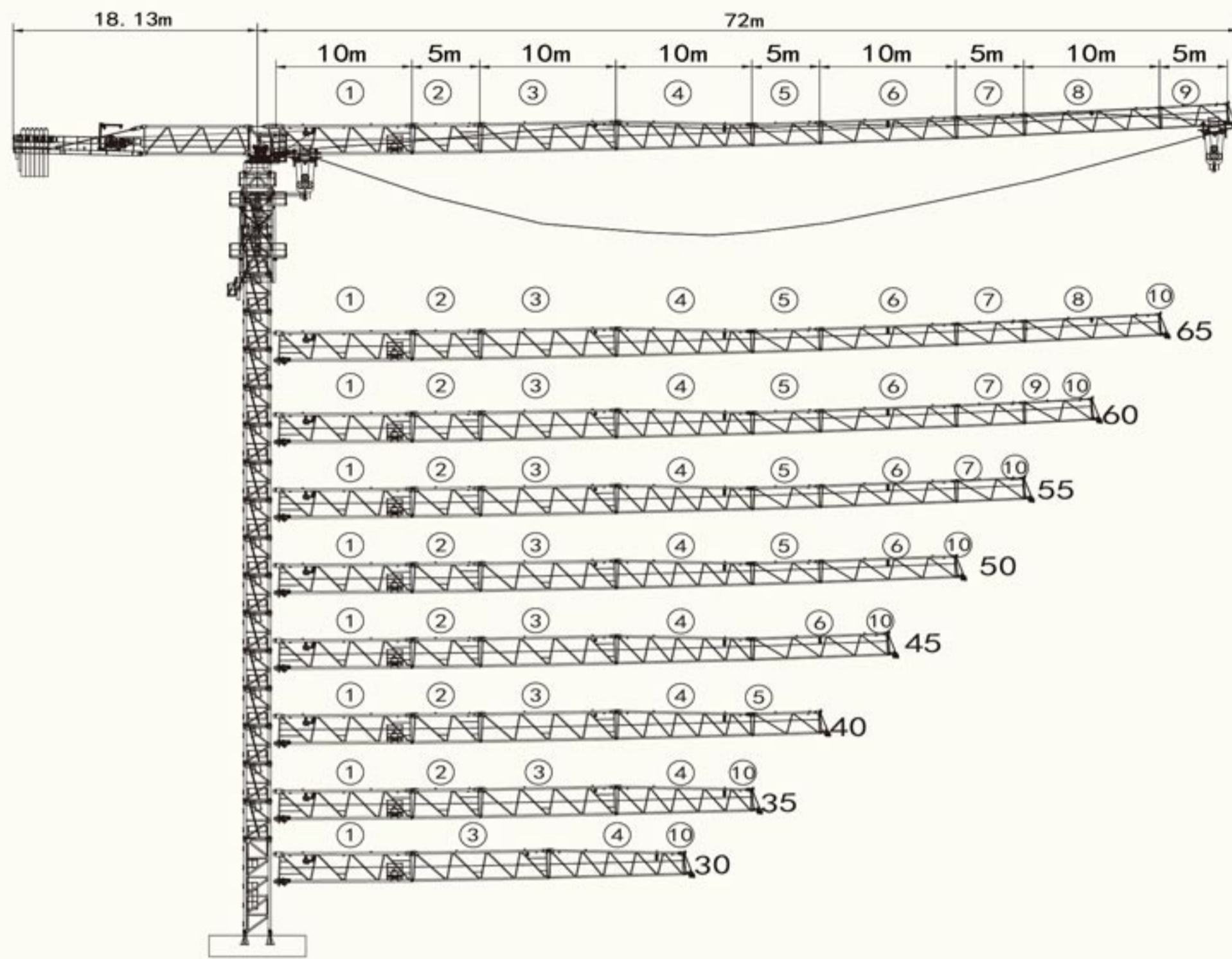
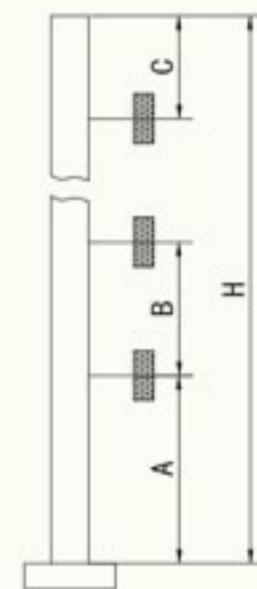
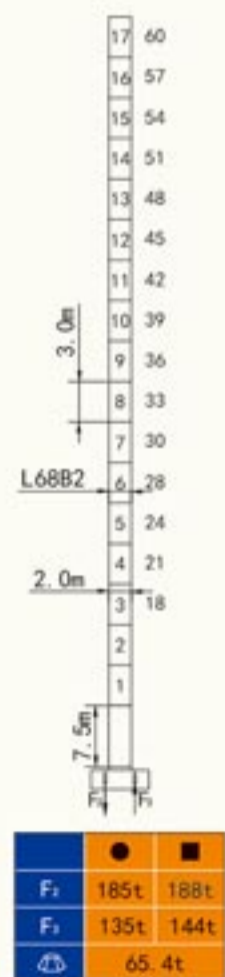


QTZ250 (H7025A)



塔身截面 Masts

附着位置及塔机高度 Anchorage



Mast	A	B	C	H
L68B2	48.15m	36.0m	40.5m	333m

● 工作状态支反力 Reactions in service
 ■ 非工作状态支反力 Reactions out of service
 ⊕ 不含平衡重及压重塔机重量 Total weight of free standing crane (exclude Counter weight & ballast)

附着道数: Number of tie collar=(H-A-C)/B+1

载荷特性表 Load Diagrams 16t

R _{in}	Fall	R.C _{max} (%)	C _{max} (t)	20	25	30	35	40	45	50	55	60	65	70
70m	↓	13.0	16.0	9.93	7.67	6.17	5.09	4.29	3.66	3.16	2.75	2.41	2.12	1.87
	⊕	25.9	8.0	8.0	8.0	6.80	5.72	4.92	4.29	3.79	3.38	3.04	2.75	2.50
65m	↓	15.0	16.0	11.60	8.96	7.21	5.95	5.01	4.27	3.69	3.21	2.81	2.47	
	⊕	29.5	8.0	8.0	8.0	7.84	6.85	5.64	4.90	4.32	3.84	3.44	3.10	
60m	↓	15.7	16.0	12.22	9.48	7.65	6.34	5.36	4.60	3.99	3.49	3.07		
	⊕	31.6	8.0	8.0	8.0	8.0	6.97	5.99	5.23	4.62	4.12	3.70		
55m	↓	16.5	16.0	12.94	10.06	8.14	6.76	5.73	4.93	4.29	3.77			
	⊕	32.6	8.0	8.0	8.0	8.0	7.39	6.36	5.56	4.92	4.40			
50m	↓	17.2	16.0	13.56	10.56	8.57	7.14	6.07	5.24	4.57				
	⊕	34.0	8.0	8.0	8.0	8.0	7.77	6.70	5.87	5.20				
45m	↓	17.5	16.0	13.82	10.78	8.75	7.30	6.22	5.37					
	⊕	34.7	8.0	8.0	8.0	8.0	7.93	6.85	6.0					
40m	↓	17.5	16.0	13.78	10.70	8.64	7.17	6.07						
	⊕	34.2	8.0	8.0	8.0	8.0	7.80	6.70						
35m	↓	17.5	16.0	13.72	10.57	8.47	6.97							
	⊕	33.5	8.0	8.0	8.0	8.0	7.60							
30m	↓	17.0	16.0	11.30	10.24	8.20								
	⊕	30.0	8.0	8.0	8.0	8.0								

机构 Mechanisms 16t

名称	起升		变幅		容量	电机功率
	m/min	t	m/min	t		
起升 Hoisting	16t	55LVF40	0-100	3.0	805	55
			0-34	8.0		
变幅 Trolleying		BP6575X		0-65	m/min	7.5
回转 Slewing		2RVF7.5		0-0.6	rpm	7.5×2
电源 Power	380V (±10%) /50Hz					77.5kW

平衡重 Counterweight

			PHZ3500	PHZ1300	PHZ600
70m	18.13m	22900kG	6	1	1
65m	18.13m	22300kG	6	1	/
60m	18.13m	21000kG	6	/	/
55m	18.13m	21000kG	6	/	/
50m	18.13m	19400kG	5	1	1
45m	18.13m	18100kG	5	/	1
40m	18.13m	17500kG	5	/	/
35m	18.13m	15300kG	4	1	/
30m	18.13m	12400kG	3	1	1