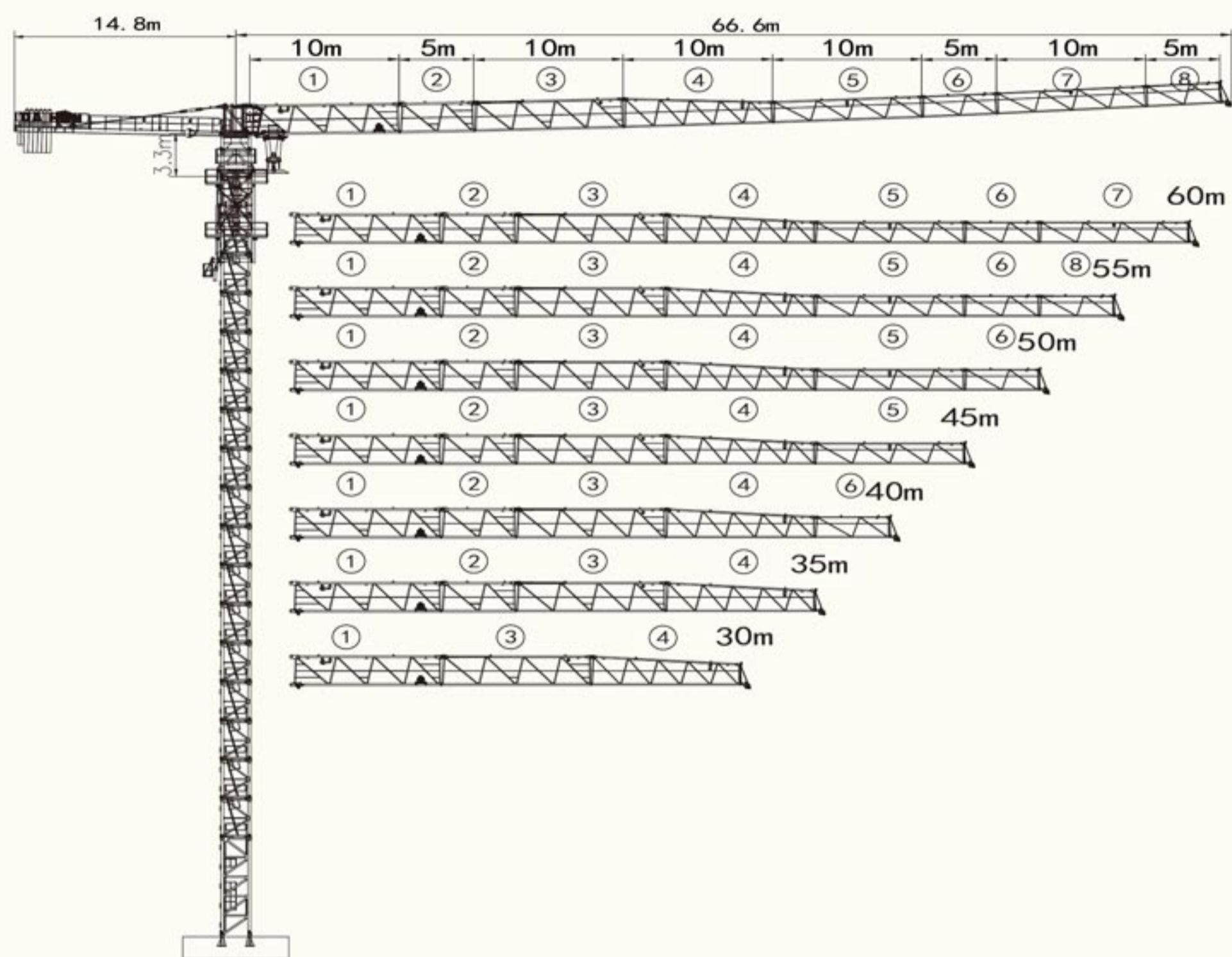
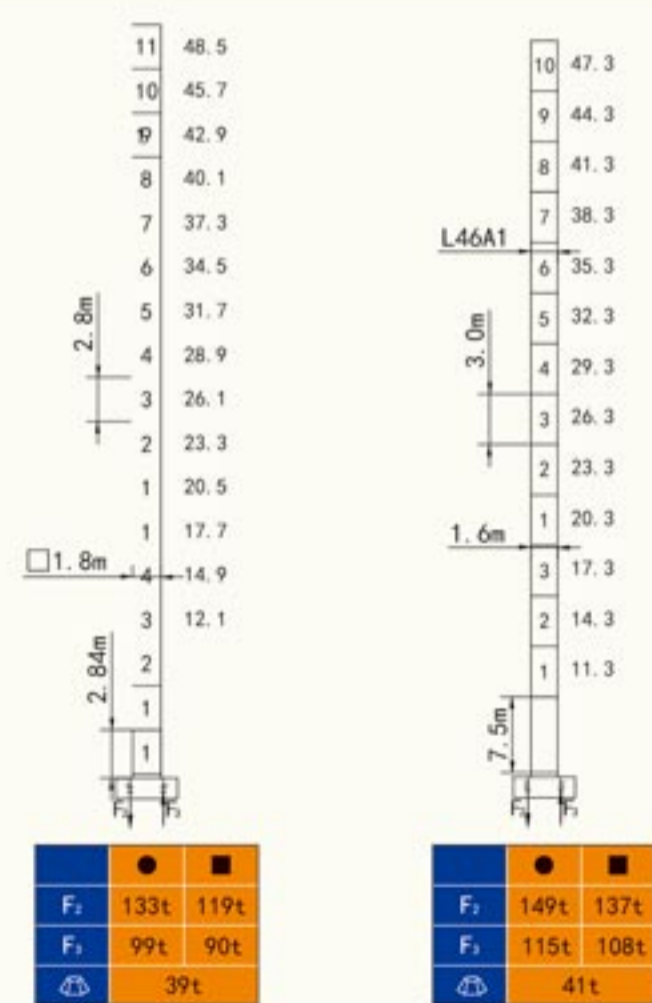


# QTZ160 (H6515A2)

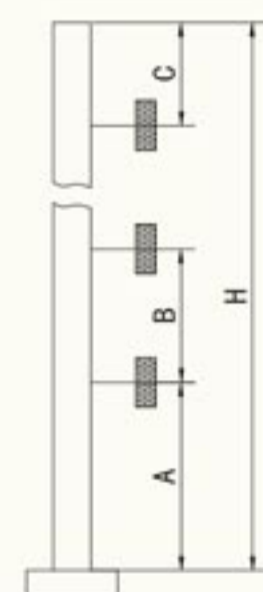


## 塔身截面 Masts

## 附着位置及塔机高度 Anchorage



● 工作状态支反力 Reactions in service  
 ■ 非工作状态支反力 Reactions out of service  
 △ 不含平衡重及压重塔机重量 Total weight of free standing crane (exclude Counter weight & ballast)



Mast	A	B	C	H
□ 1.8	40.64m	25.2m	32.2m	200m
L46A1	39.15m	27.0m	34.5m	200m

附着道数: Number of tie collar=(H-A-C)/B+1

## 载荷特性表 Load Diagrams 10t

R <sub>(m)</sub>	Fall	R <sub>Cmax(m)</sub>	C <sub>max(t)</sub>	20	25	30	35	40	45	50	55	60	65
65m	↓	14.5	10.0	6.94	5.34	4.28	3.51	2.94	2.50	2.14	1.85	1.61	1.40
	⊥	26.9	5.0	5.0	5.0	4.38	3.61	3.04	2.60	2.24	1.95	1.71	1.50
60m	↓	16.0	10.0	7.85	6.12	4.97	4.15	3.54	3.06	2.67	2.36	2.10	
	⊥	30.4	5.0	5.0	5.0	5.0	4.25	3.64	3.16	2.77	2.46	2.20	
55m	↓	16.3	10.0	8.0	6.24	5.07	4.23	3.60	3.11	2.72	2.40		
	⊥	30.9	5.0	5.0	5.0	5.0	4.33	3.70	3.21	2.82	2.50		
50m	↓	16.7	10.0	8.21	6.41	5.20	4.35	3.70	3.20	2.80			
	⊥	31.6	5.0	5.0	5.0	5.0	4.45	3.80	3.30	2.90			
45m	↓	18.0	10.0	8.92	6.97	5.67	4.74	4.04	3.54				
	⊥	34.0	5.0	5.0	5.0	5.0	4.84	4.14	3.64				
40m	↓	19.0	10.0	9.45	7.35	5.95	4.95	4.20					
	⊥	35.3	5.0	5.0	5.0	5.0	5.0	4.30					
35m	↓	18.3	10.0	9.07	7.08	5.75	4.80						
	⊥	35.0	5.0	5.0	5.0	5.0	5.0	4.90					
30m	↓	18.3	10.0	9.07	7.08	5.70							
	⊥	30.0	5.0	5.0	5.0	5.0							

## 机构 Mechanisms 10t

名称	起升		变幅		容量	电机功率
	m/min	t	m/min	t		
起升 Hoisting	10t	45LVF25	0-80	2.5	500	45
			0-40	5.0		
变幅 Trolleying		BP5840X	0-58 m/min			4.0
回转 Slewing		2RVF5.5	0-0.6 rpm			5.5×2
电源 Power	380V (±10%) /50Hz			60kW		

## 平衡重 Counterweight

吊钩高度	吊钩间距	平衡重	PHZ2600	PHZ1000
65m	14.8m	17600kg	6	2
60m	14.8m	17600kg	6	2
55m	14.8m	16600kg	6	1
50m	14.8m	15600kg	6	/
45m	14.8m	15000kg	5	2
40m	14.8m	14000kg	5	1
35m	14.8m	12400kg	4	2
30m	14.8m	10400kg	4	/