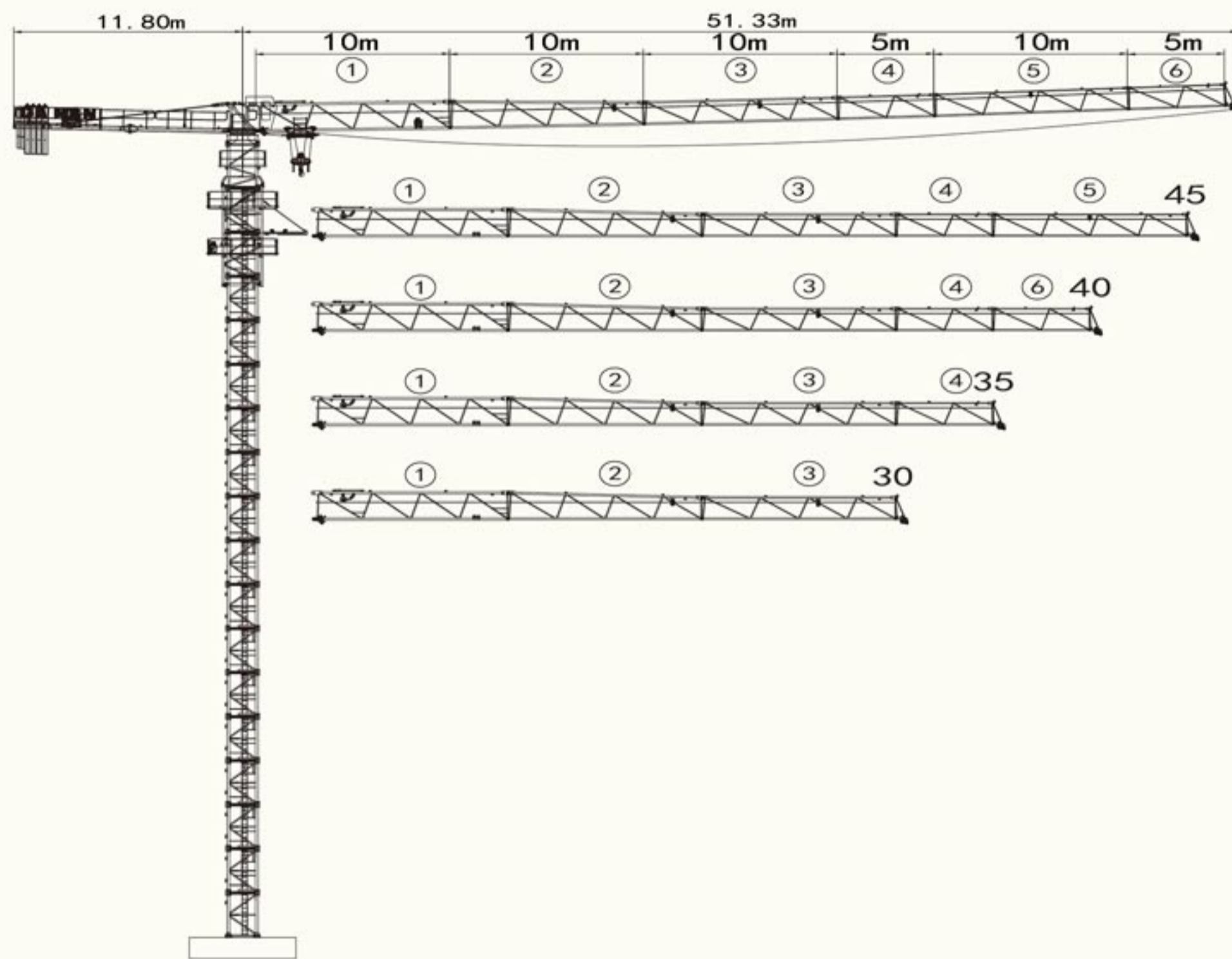
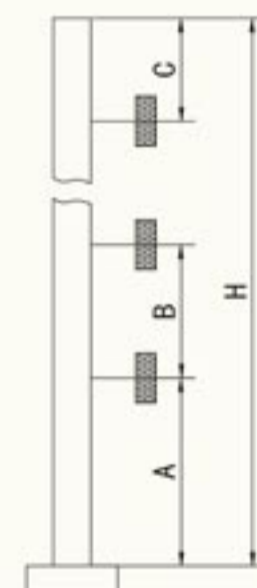
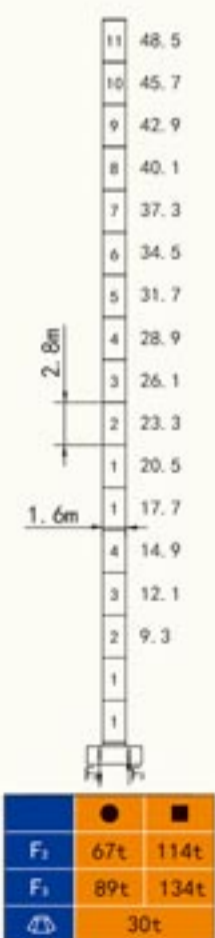


# QTZ63 (H5013A)



## 塔身截面 Masts

## 附着位置及塔机高度 Anchorage



Mast	A	B	C	H
□ 1.6	40.6m	22.4m	29.4m	150m

● 工作状态支反力 Reactions in service  
 ■ 非工作状态支反力 Reactions out of service  
 ⊕ 不含平衡重及压重塔机重量 Total weight of free standing crane (exclude Counter weight & ballast)

附着道数: Number of tie collar=(H-A-C)/B+1

## 载荷特性表 Load Diagrams 5t

R(m)	Full	R <sub>Cmax</sub> (t)	C <sub>max</sub> (t)	20	25	30	35	40	45	50
50m		17.3	5.0	4.21	3.20	2.54	2.07	1.72	1.45	1.24
		31.0	2.50	2.50	2.50	2.50	2.13	1.78	1.51	1.30
45m		17.6	5.0	4.31	3.28	2.61	2.13	1.77	1.50	
		31.6	2.50	2.50	2.50	2.50	2.19	1.83	1.56	
40m		17.8	5.0	4.36	3.32	2.64	2.16	1.80		
		31.9	2.50	2.50	2.50	2.50	2.22	1.86		
35m		18.1	5.0	4.43	3.38	2.69	2.20			
		32.4	2.50	2.50	2.50	2.50	2.26			
30m		17.9	5.0	4.38	3.34	2.66				
		30.0	3.0	2.50	2.50	2.50				

## 机构 Mechanisms 5t

名称		↓		↓		容绳量 m	电机功率 kW
		m/min	t	m/min	t		
起升 Hoisting	18.5LVF12.5	0-62	1.25	0-31	2.50	250	18.5
		0-31	2.50	0-15.5	5.00		
变幅 Trolleying	BP4030X	0-40 m/min					3.0
回转 Slewing	RVF5.5	0-0.6 rpm					5.5
电源 Power	380V (±10%) /50Hz						27kW

## 平衡重 Counterweight

			PHZ2600	PHZ1000
50m	11.80m	12400kG	4	2
45m	11.80m	11400kG	4	1
40m	11.80m	10400kG	4	/
35m	11.80m	9800kG	3	2
30m	11.80m	8800kG	3	1