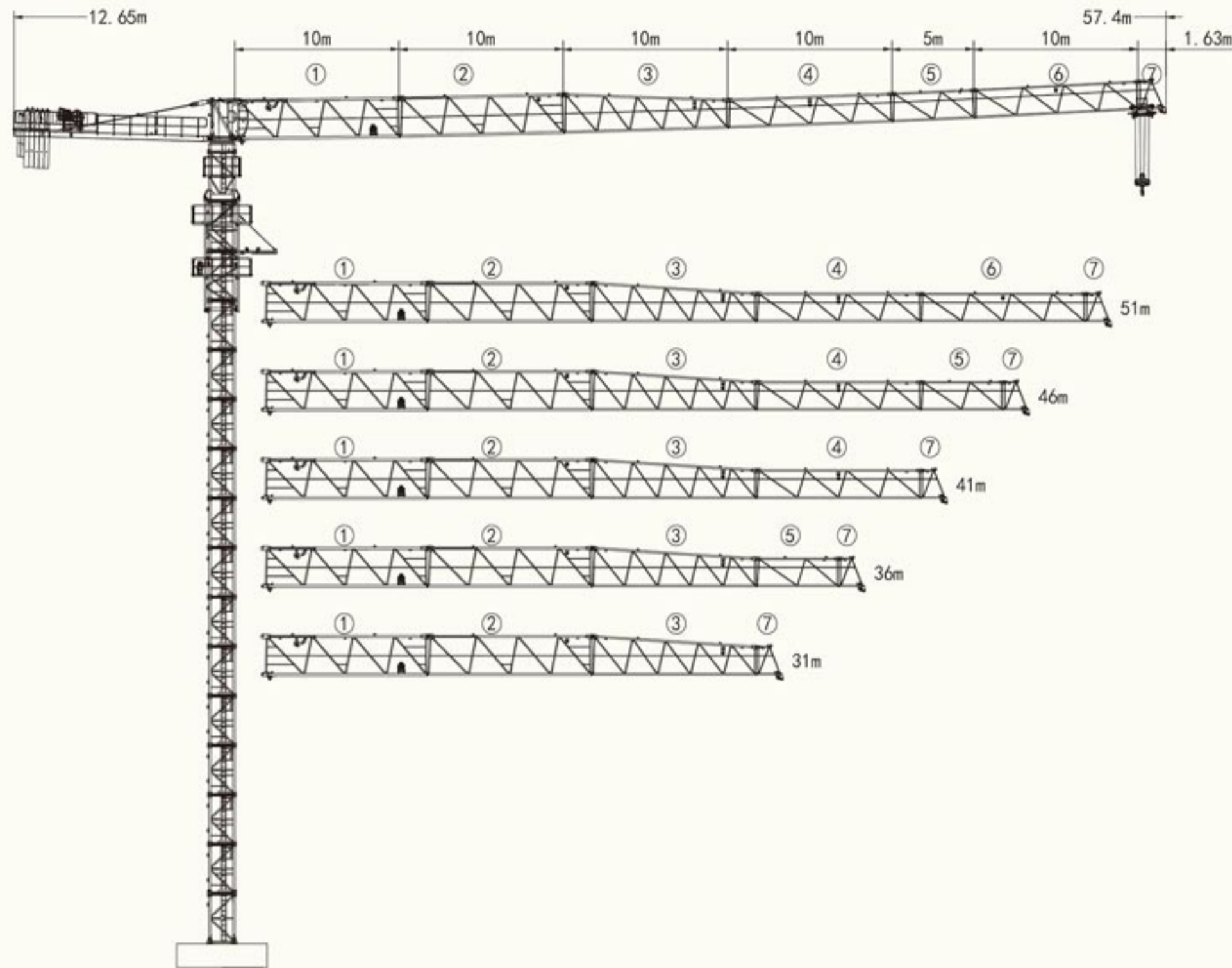
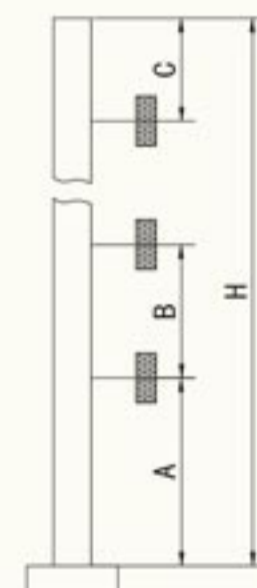
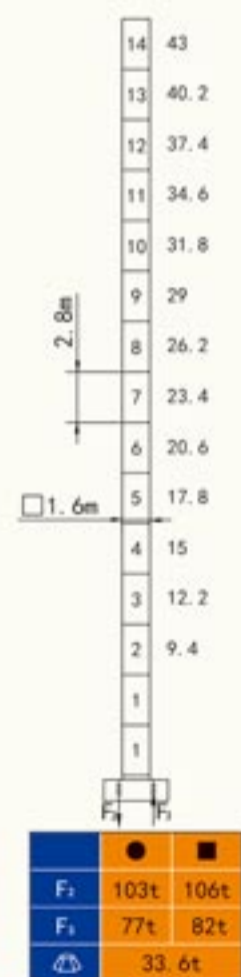


# QTZ80 (H5613A2)



## 塔身截面 Masts

## 附着位置及塔机高度 Anchorage



Mast	A	B	C	H	
□	1.6	35.04m	28.0m	32.2m	200m

● 工作状态支反力 Reactions in service    ■ 非工作状态支反力 Reactions out of service  
 ⊕ 不含平衡重及压重塔机重量 Total weight of free standing crane (exclude Counter weight & ballast)

附着道数: Number of tie collar=(H-A-C)/B+1

## 载荷特性表 Load Diagrams 6t

R <sub>吊</sub>	Fail	R <sub>Cmax</sub> (t)	C <sub>max</sub> (t)	20	25	31	36	41	46	51	55	56
56m		16.0	6.0	4.66	3.60	2.77	2.29	1.93	1.64	1.42	1.26	1.23
		29.5	3.0	3.0	3.0	3.0	2.36	2.00	1.71	1.49	1.33	1.30
51m		17.0	6.0	4.99	3.86	2.97	2.46	2.08	1.78	1.53		
		31.5	3.0	3.0	3.0	3.0	2.53	2.15	1.85	1.60		
46m		17.5	6.0	5.16	3.98	3.07	2.54	2.15	1.83			
		32.0	3.0	3.0	3.0	3.0	2.61	2.22	1.90			
41m		17.5	6.0	5.16	3.98	3.07	2.54	2.15				
		32.0	3.0	3.0	3.0	3.0	2.61	2.22				
36m		18.4	6.0	5.44	4.18	3.20	2.63					
		33.0	3.0	3.0	3.0	3.0	2.70					
31m		18.7	6.0	5.53	4.24	3.23						
		31.0	3.0	3.0	3.0	3.0						

## 机构 Mechanisms 6t

名称	起升		变幅		容绳量 m	电机功率 kW
	m/min	t	m/min	t		
起升 Hoisting	6t	22LVF15	0-70	1.5	400	22
			0-35	3.0		
变幅 Trolleying		BP4030X	0-40 m/min			3.0
回转 Slewing		RVF7.5	0-0.6 rpm			7.5
电源 Power	380V (±10%) /50Hz			33kW		

## 平衡重 Counterweight

			PHZ2600	PHZ1000
56m	12.65m	15000kG	5	2
51m	12.65m	14000kG	5	1
46m	12.65m	13000kG	5	/
41m	12.65m	11400kG	4	1
36m	12.65m	10400kG	4	/
31m	12.65m	9800kG	3	2